

CONTENTS

Product Features and Specifications	3
Installation Requirement	4
Steps of Installation.....	5
Exploded View	11
Operation Instruction	13
Maintenance	14
Trouble Shooting	15
MR06 Parts List	16

I. PRODUCT FEATURES AND SPECIFICATIONS
PORTABLE MID-RISED MODEL MR06

- Automatic safety lock: 3 position safety lock, mechanical safety lock release, No need air source.
- High speed: From 0-1090mm (43") in just 14 seconds
- Portable design: It is easy to move the unit with the power unit stand
- Adjustable rubber pads included

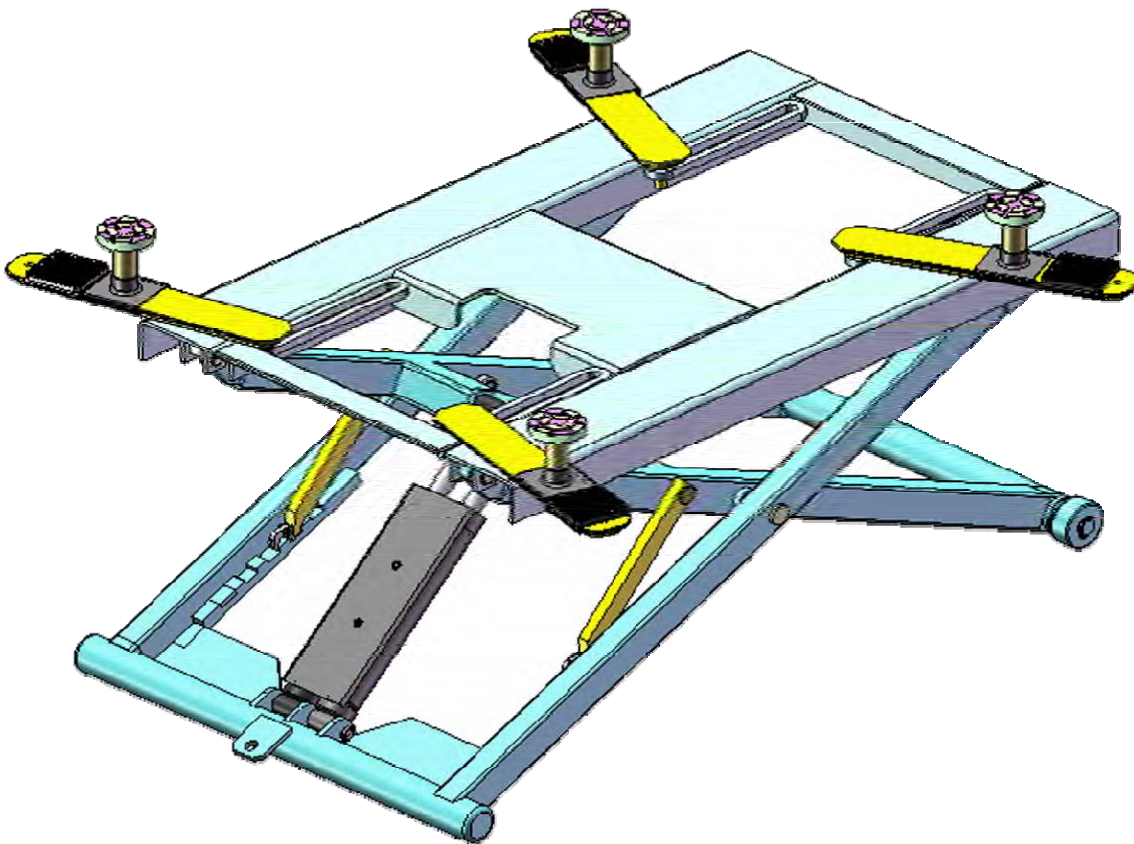


Fig.1

MODEL MR06 SPECIFICATIONS

Model	Lifting Capacity	Raised Height	Lifting Time	Overall Length	Overall Width	Lowered Height	Gross Weight	Motor
MR06	2.8T 6,000 lbs	1090mm 43"	14S	1885mm 74 1/4	1000mm 39 3/8"	125mm 5"	350Kg 770 lbs	3HP 220V 1.5HP 110V

II. INSTALLATION REQUIREMENT

A. TOOLS REQUIRED

✓ Screw Driver Set



✓ Crescent Wrench (12")



✓ Wrench sets: (13#, 15#, 17#, 19#)



✓ Grease gun



✓ Hook Spanner (40~42mm)



✓ Pliers



Fig. 2

B. POWER SUPPLY

The electrical source must be a minimum 1.5HP 110 volt or 3.0HP 220 volt. The source cable size must be 12 gauge (2.5mm²) and in good condition with a ground.

III. INSTALLATION STEPS

A. Check the parts before assembly, make sure all the parts are present.

1. Packaged lift, Parts box, Power Unit and Power Unit Stand.

Move the parts aside, open the outer packing and check the parts according to the shipment parts list (See Fig. 3).

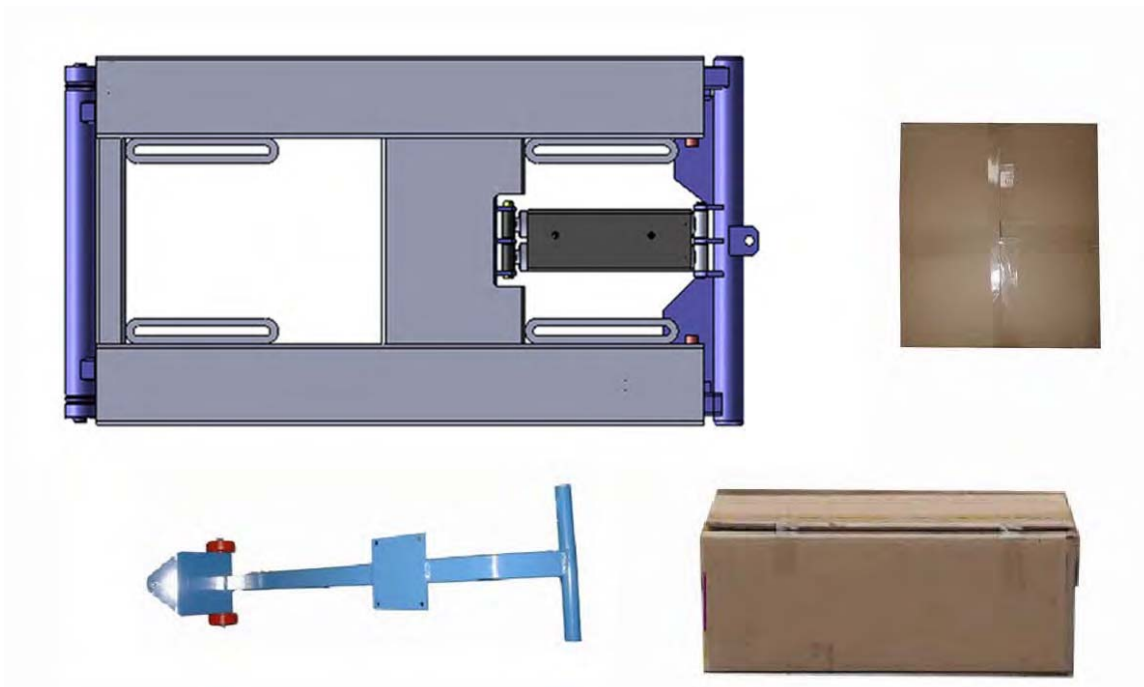


Fig. 3

2. Open the parts box, check the parts according to the part list (See Fig. 4).



Fig. 4

3. Check the parts of the parts bag according to the parts bag list (See Fig. 5).



Fig.5

B. Install hydraulic power unit and needle valve (See Fig. 6)

Install the Needle Valve as
arrow direction

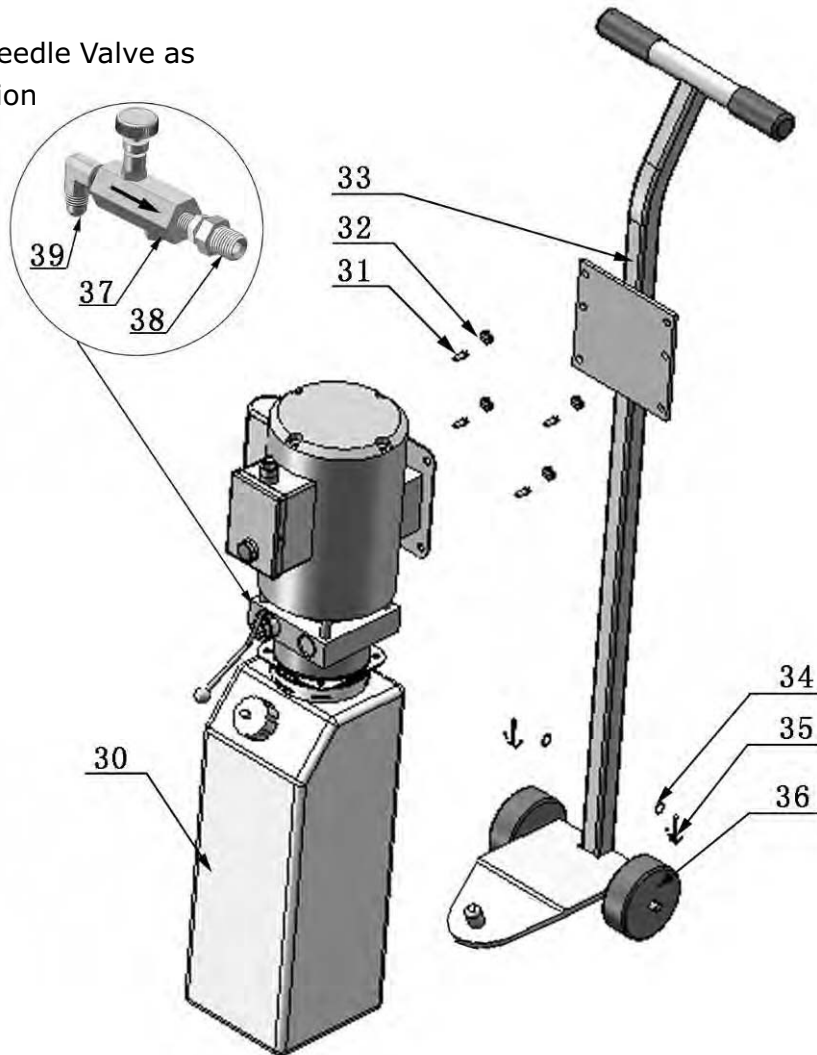


Fig. 6

C. Install oil hose (See Fig. 7)

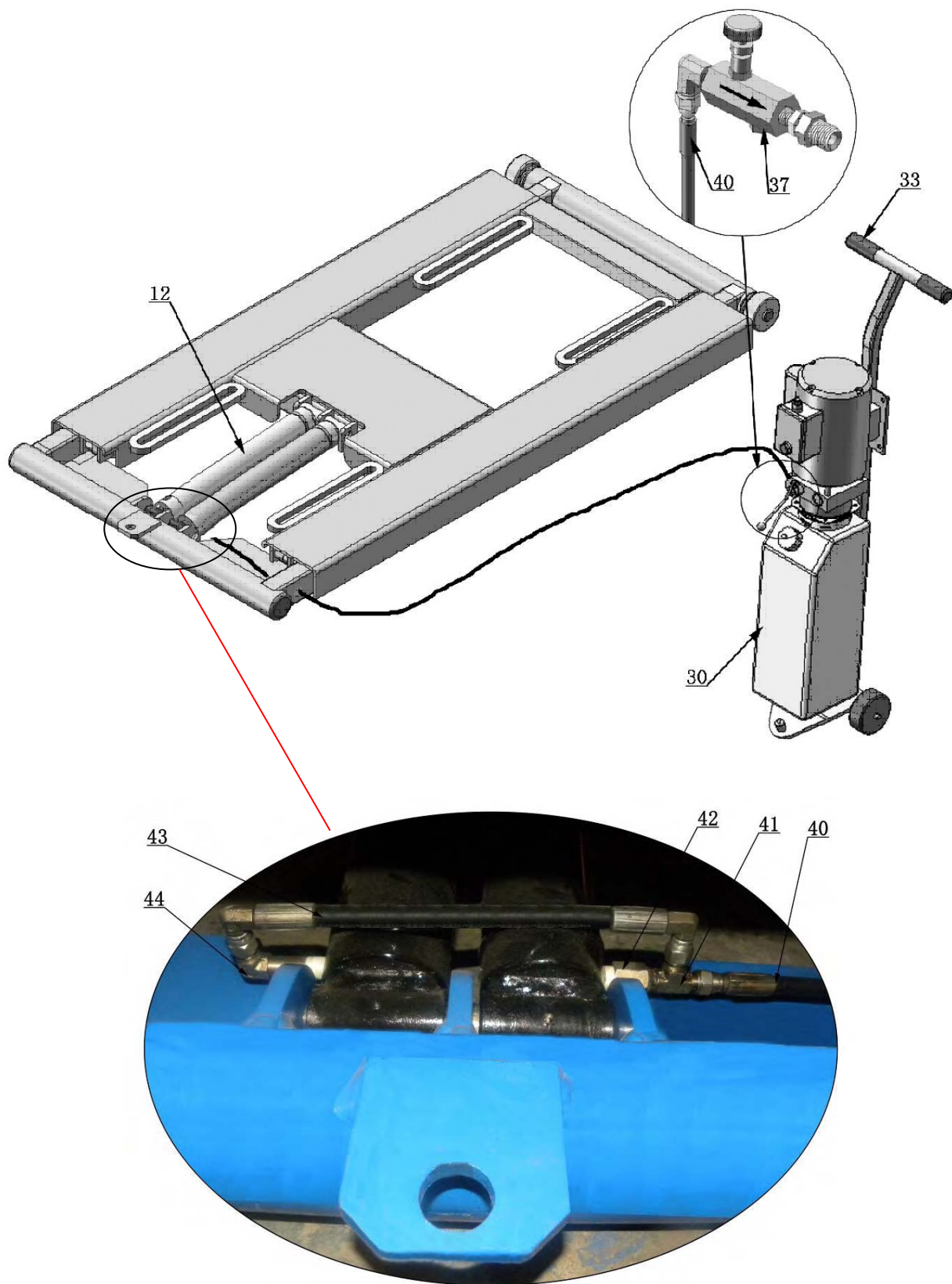


Fig. 7

D. Install support arms

1. Prepare the parts for the support arms (See Fig. 8)



Fig. 8

2. Install support arms and pads (See Fig. 9)

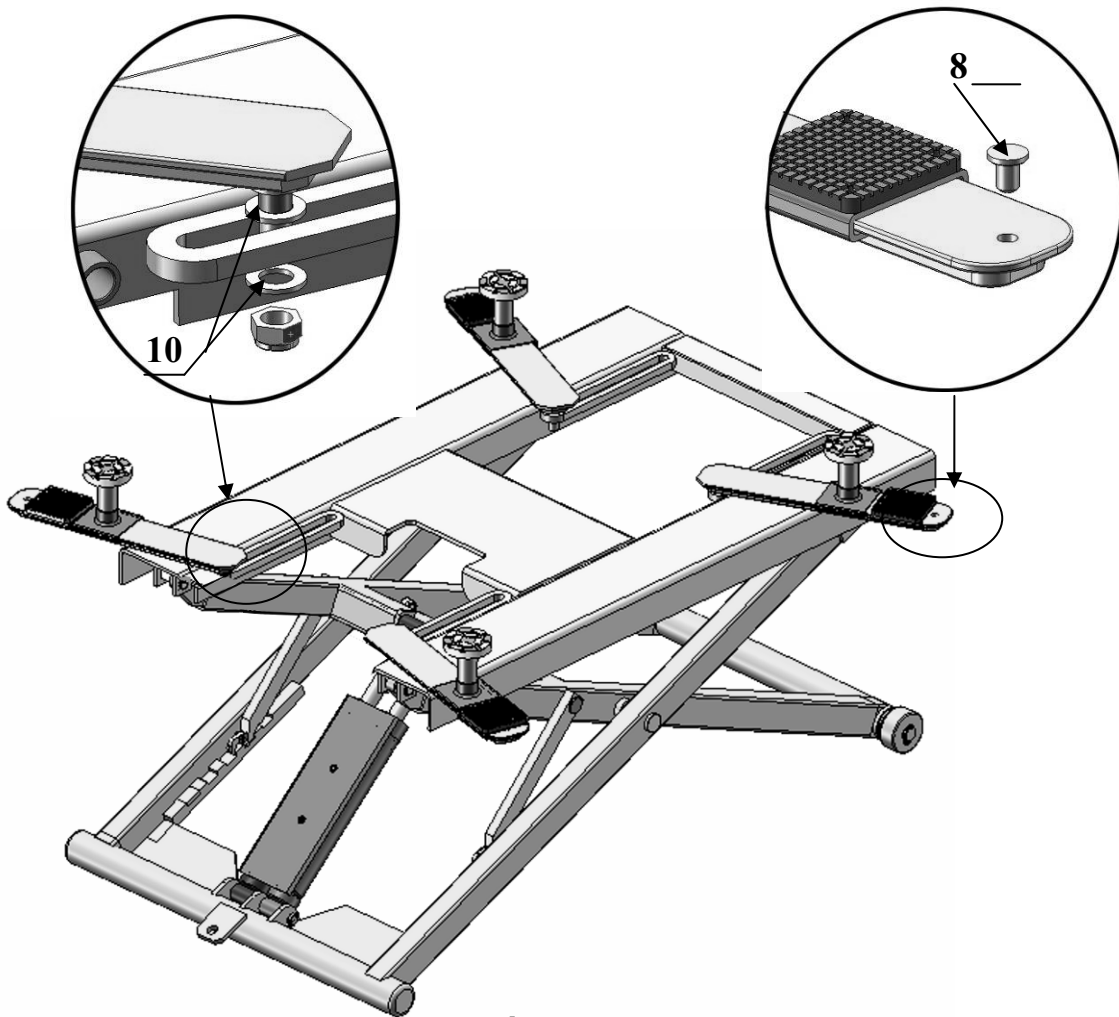


Fig. 9

E. Install electrical supply

Connect the power source on the data plate of Motor

Note: 1. For safety purposes, the power wiring must well grounded.

ATLAS Single phase motor (See Fig. 10)

1. Connect the two power supply lines (fire wire **L** and zero wire **N**) to terminals on the AC contactor marked **L1, L2**.
2. Connect the two motor wires to the terminals on the AC contactor marked **T1, T2**.
3. Connect **L2** to **A2** on the AC contactor.
4. Two wires on the control button connect with terminals on the AC contactor marked **A1, L1**.

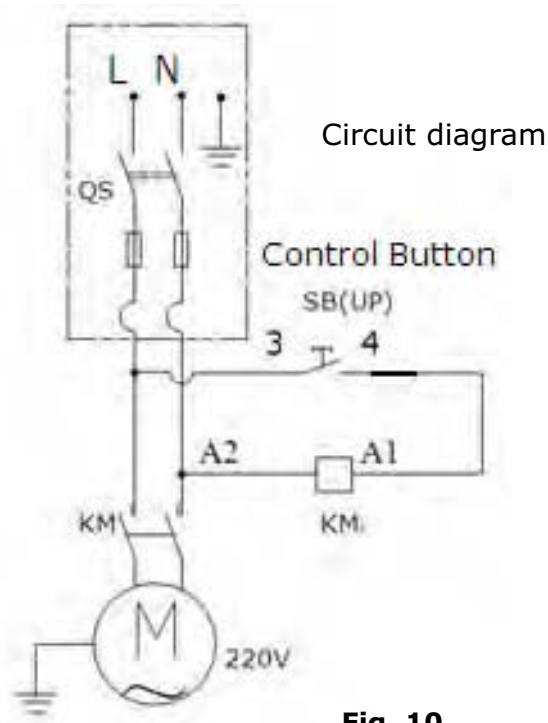
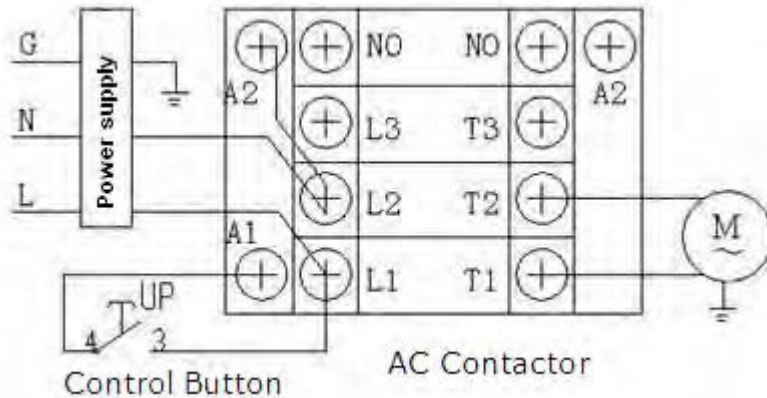


Fig. 10

SPX Single phase motor (See Fig. 11)

1. Power supply line (fire wire **L**) connected with wire **4#** on the control button.
2. Wire **3#** on the control button connected with wire **6#** on the motor.
3. Power supply line (zero wire **N**) connected with wire **5#** on the motor.

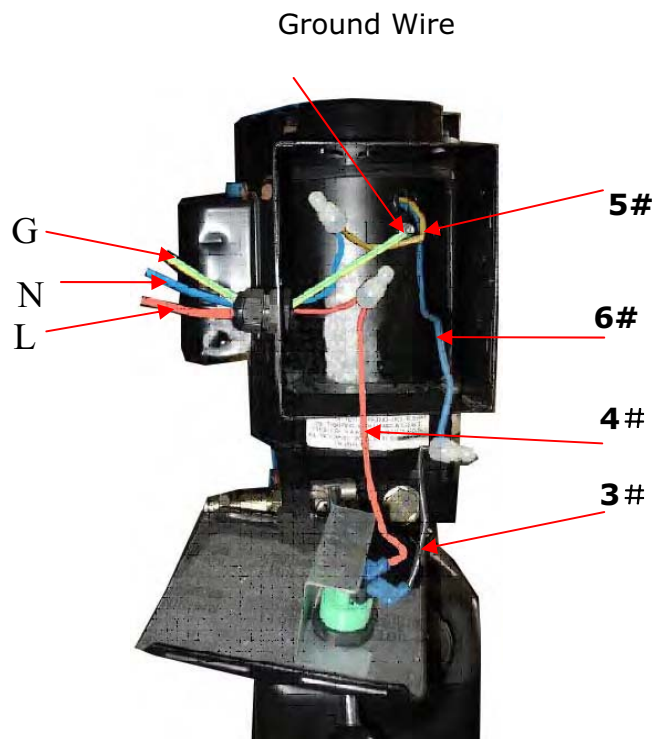
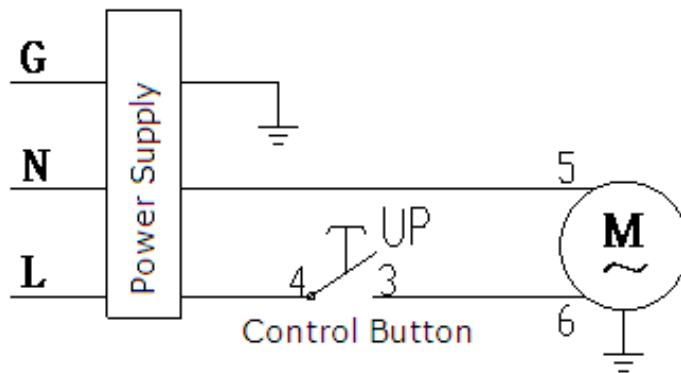


Fig. 11

IV. EXPLODED VIEW
Model MR06

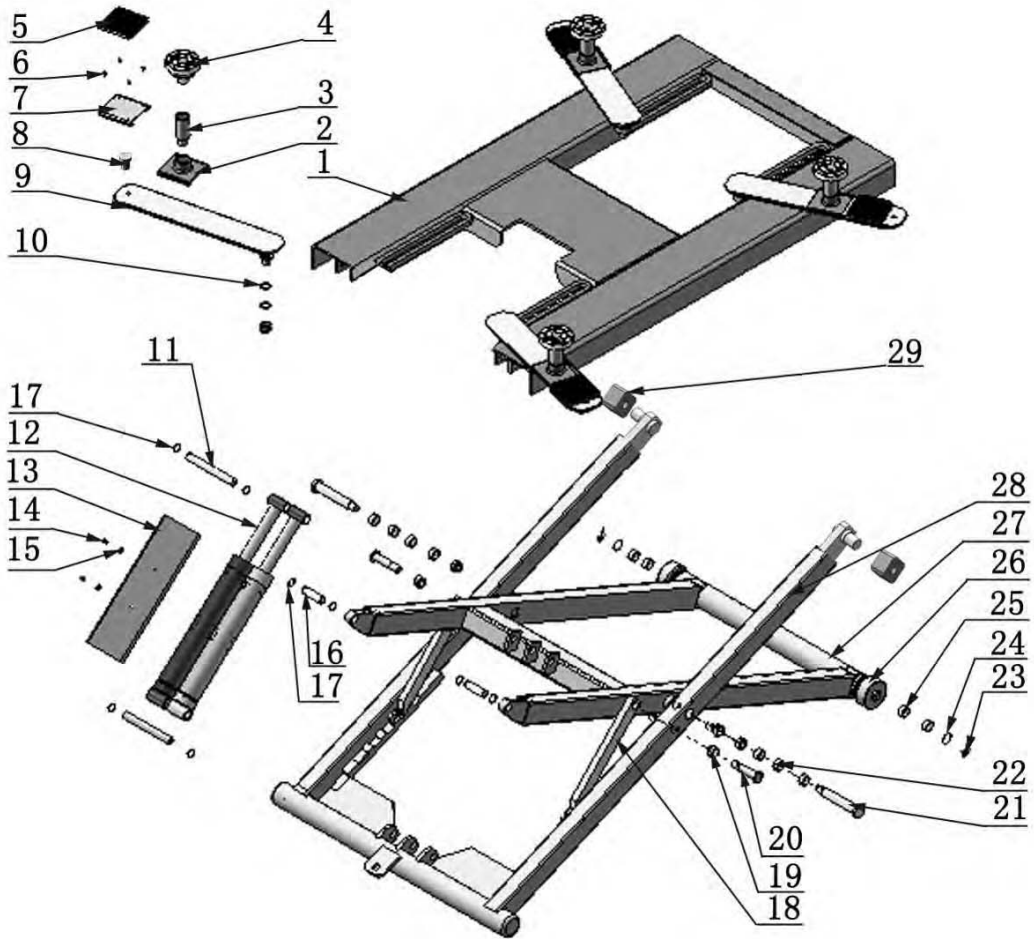


Fig. 12

CYLINDER

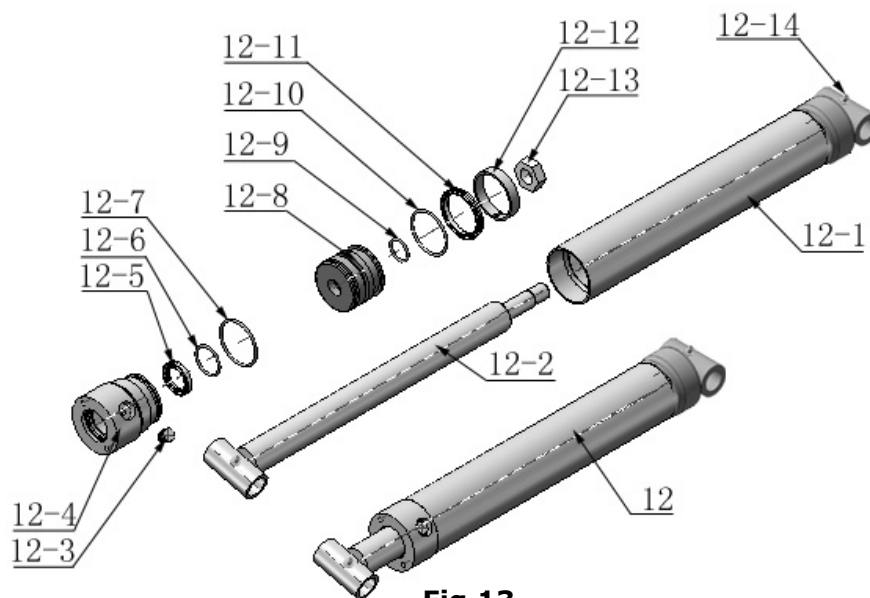


Fig.13

ATLAS MANUAL POWER UNIT

110V/60HZ/1 phase

220v/60HZ/ 1 phase

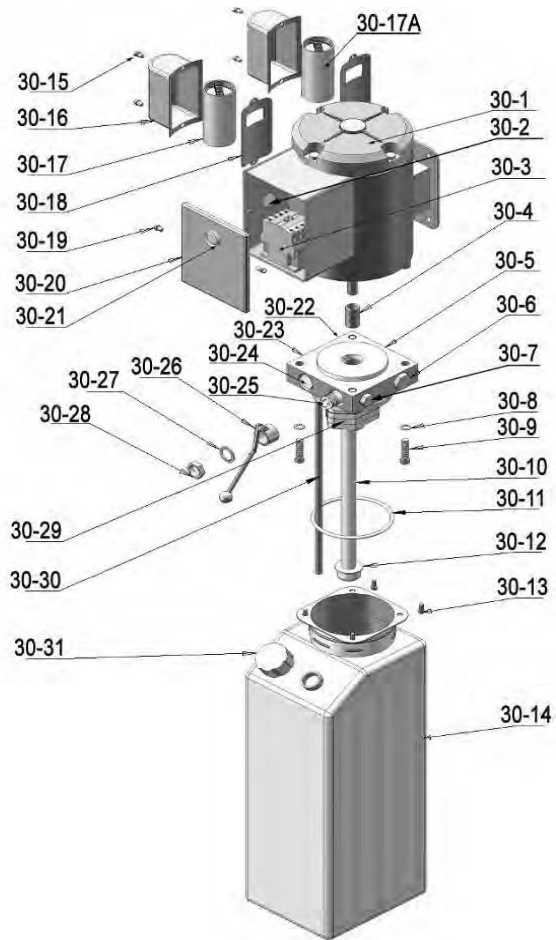


Fig.14

Illustration of hydraulic valve for ATLAS manual power unit (See Fig. 15)

110V/60HZ/1 phase

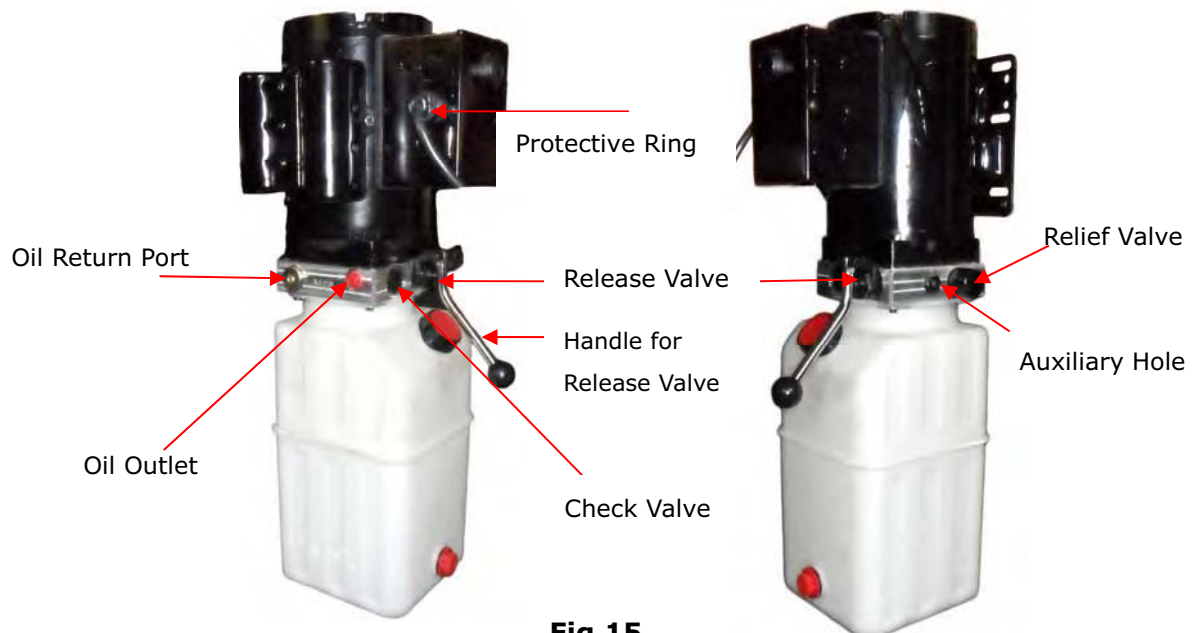
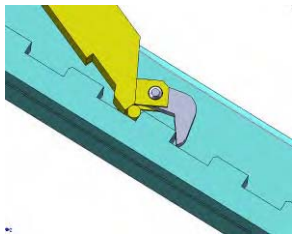


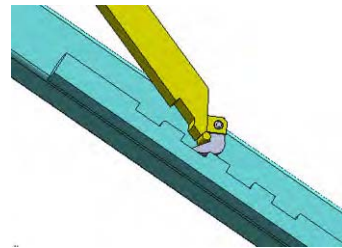
Fig.15

V. OPERATION INSTRUCTIONS

1. Install the oil hose between oil cylinder and power unit, connect with the power supply wire well.
2. When lifting a vehicle, be sure the center of gravity of the vehicle must be in the middle of lift, select the suitable adapters and move the arms to find the support point. Make sure the safety lock is engaging when lifting (**See Fig. 16**).
3. Lower the lift: Press the button **UP**, until the safety lock is in the released position (**See Fig.17**), lower the lift by pushing lowering handle.



Safety lock
Fig. 16

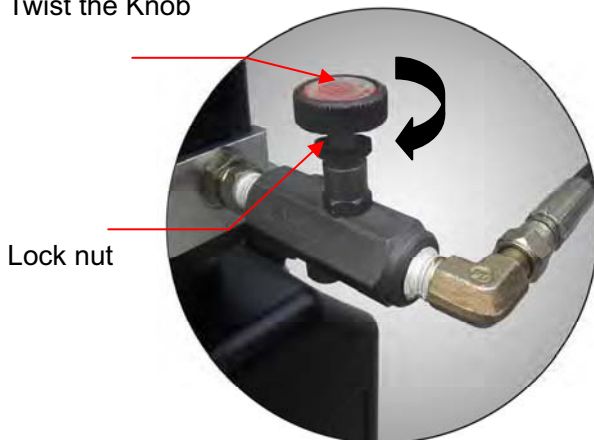


Safety release
Fig.17

4. Needle Valve adjustment

Loosen the locked nut, and then twist the knob clockwise to decrease the lower speed; or counter-clockwise to increase the lower speed. Do not forget to tighten the lock nut after the lower speed adjustment has been done (**See Fig.18**).

Twist the Knob



Lock nut

Twist the knob clockwise



Twist the knob
counter-clockwise

Fig. 18

5. Move the lift with the power unit stand (**See Fig. 19**)

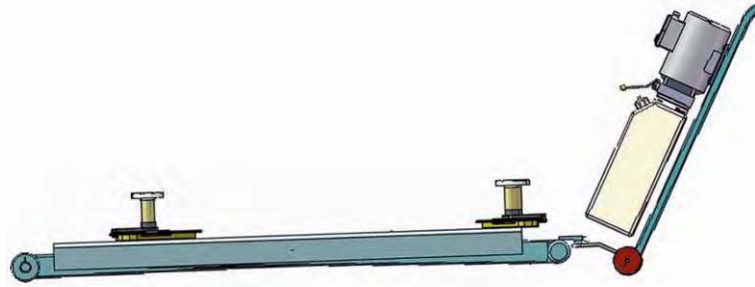


Fig. 19

VI. MAINTENANCE SCHEDULE

Monthly:

1. Lubricate all moving parts with lubricant (**See Fig.20**).

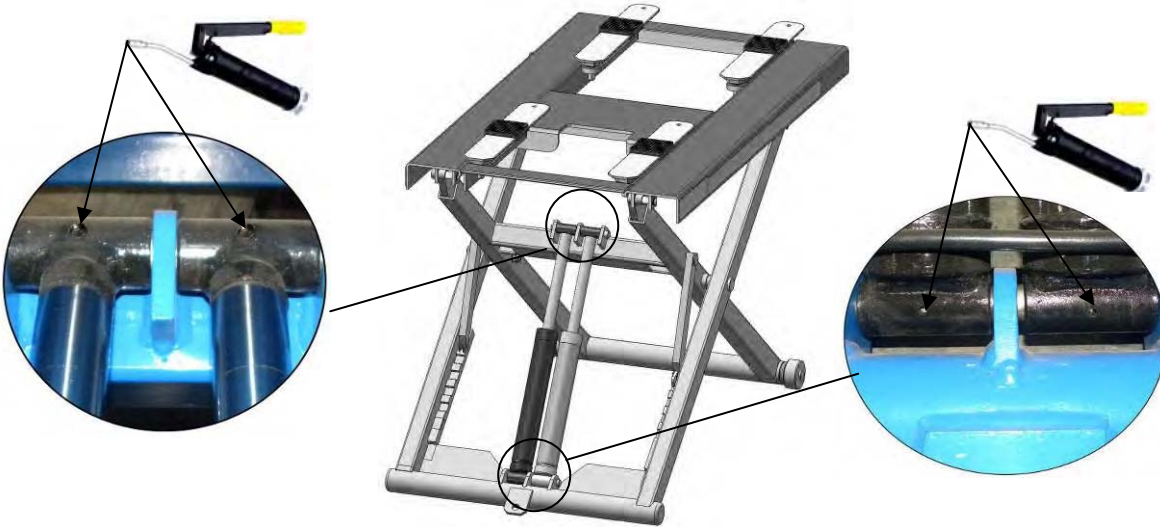


Fig. 20

2. Check all connectors, bolts and pins to insure proper mounting.

3. Make a visual inspection of all hydraulic hoses/lines for possible wear or leakage.

Every six months:

1. Make a visual inspection of all moving parts for possible wear, interference or damage.

2. Check all fasteners and re-torque.

VII. TROUBLE SHOOTING

TROUBLE	CAUSE	REMEDY
Motor does not run	<ol style="list-style-type: none"> 1. Button does not work 2. Wiring connections are not in good condition 3. Motor burned out 4. Safety Switch is damaged 5. AC contactor burned out 	<ol style="list-style-type: none"> 1. Replace button 2. Repair all wiring connections 3. Repair or replace motor 4. Replace the Safety Switch 5. Replace AC Contactor
Motor runs but the lift is not raised	<ol style="list-style-type: none"> 1. Motor runs in reverse rotation 2. Gear Pump out of operation 3. Release Valve is damaged 4. Relief Valve or Check Valve in damage 5. Low oil level 6. Overload lifting or low pressure 	<ol style="list-style-type: none"> 1.Reverse two power wire 2. Repair or replace 3. Repair or replace 4. Repair or replace 5. Fill tank 6.Check load or adjust the pressure
Lift does not stay up	<ol style="list-style-type: none"> 1. Release Valve does not work 2. Relief Valve or Check Valve leaking 3. Cylinder or Fittings leak 	Repair or replace
Lift raises slowly	<ol style="list-style-type: none"> 1. Oil line is jammed 2. Motor running on low voltage 3. Oil mixed with air 4. Gear Pump leaks 5. Overloading lift 	<ol style="list-style-type: none"> 1. Clean the oil line 2. Check Electrical System 3. Fill tank 4. Repair or replace 5. Check load
Lift can not lower	<ol style="list-style-type: none"> 1. Safety device is not activated 2. Release Valve is damaged 3. Oil system is jammed 	<ol style="list-style-type: none"> 1. Release the safeties 2. Repair or replace 3. Clean the oil system

VIII. PARTS LIST FOR MODEL MR06

Item	Part#	Description	QTY.	Note
(See Fig. 14, Fig.6-7)				
1	640001A	Platform	1	
2	640002	Stackable Adapter Bracket	4	
3	209052	Stackable Adapter (3")	4	
3A	209051	Stackable Adapter (1.5")	4	
4	209040	Lift Pad Weldment	4	
5	680004	Rubber Pad	4	
6	680005	Cup Head Bolt	16	
7	640003	Supporting pad	4	
8	640023A	Limit pin	4	
9	640004	Supporting arm	4	
10	640005	Washer	8	
11	640006	Pin For Cylinder Connecting	2	
12	640007	Cylinder	2	
13	640008	Cylinder Cover	1	
14	209009	Cup Head Bolt	2	
15	420045	Washer	2	
16	640009	Inner Scissor Pin	2	
17	206032	Snap Ring	8	
18	640010	Safety Bar Set	2	
19	620022	Nylok Nut	8	
20	640011	Safety Pin	2	
21	640012	Scissors Pin	2	
22	203004A	Bronze Bush	8	
23	630107	Split Pin	2	
24	420023A	Washer	2	
25	520031	Bronze Bush	4	
26	640022	Roller	2	
27	640016	Inner Scissor	1	
28	640017	Outer Scissor	1	
29	610003A	Slider	2	
30	640020	Manual Power Unit	1	
31	209003	Hex Bolt	4	
32	209005	Nylok Nut	4	
33	640021	Power Unit Stand	1	
34	206006	Washer	2	

Item	Part#	Description	QTY.	Note
35	201005	Split Pin	2	
36	640022	Roller	2	
37	440011	Needle Valve	1	
38	440009	Straight Fitting For Power Unit	1	
39	420097	90° Fitting	1	
40	630101	Oil Hose	1	
41	209062	T-Fitting	1	
42	630103	Straight Fitting	1	
43	640052	Oil Hose	1	
44	211017	Extended 90° Fitting	1	
PARTS FOR HYDRAULIC CYLINDER (See Fig. 15)				
12-1	640030A	Bore Weldment	2	
12-2	640031A	Piston Rod	2	
12-3	201034	Bleeding Plug	2	
12-4	201033	Head Cap	2	
12-5	209078	Dust Ring	2	
12-6	201032	O - Ring	2	
12-7	201035	O - Ring	2	
12-8	201028	Piston	2	
12-9	206069	O-Ring	2	
12-10	201031	O-Ring	2	
12-11	201030	Y-Ring	2	
12-12	201029	Support Ring	2	
12-13	206071	Nut	2	
12-14	620064	Greasing Fitting	4	
PEAK manual Power Unit 110V/60HZ/1 phase (See Fig. 16)				
30-1	209119A	Motor	1	
30-2	209109	Protective Ring	1	
30-3	209112	A.C. Contactor	1	
30-4	209083A	Motor Connecting Pin	1	
30-5	209084A	Valve Body	1	
30-6	209085A	Relief Valve	1	
30-7	209113	Throttle Valve	1	
30-8	209086A	Lock Washer	4	
30-9	209087A	Socket Bolt	4	
30-10	209120A	Inlet Pipe	1	
30-11	209089A	O-ring	1	
30-12	209090A	Filter	1	

Item	Part#	Description	QTY.	Note
30-13	209091A	Socket Bolt	4	
30-14	209121A	Reservoir	1	
30-15	209093A	Cup Head Bolt with washer	4	
30-16	209094A	Cover of Capacitor	2	
30-17	209122A	Start Capacitor	1	
30-17A	209123A	Running Capacitor	1	
30-18	209096A	Rubber Gasket	2	
30-19	209097A	Cup Head Bolt with washer	2	
30-20	209098A	Cover of Motor Terminal Box	1	
30-21	209099A	Control Switch	1	
30-22	209110A	Oil Return Port	1	
30-23	209100A	Oil Outlet	1	
30-30	209105A	Check Valve	1	
30-25	209101A	Release Valve	1	
30-26	209102A	Release Valve Handle	1	
30-27	209103A	Washer	1	
30-28	209104A	Hex Nut	1	
30-29	209130A	Gear Pump	1	
30-30	209125A	Oil Return Pipe	1	
30-31	209108A	Filler Cap	1	